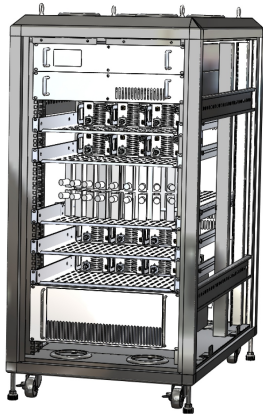


Compact S- Band 15 kW / High Power Amplifier

Model – HP2.73.1G7370AC-A2



Dimensions
24" Wide
72" High
38" Deep

Air cooled

20 kW watts Pk 2.7 to 3.1 GHz

20 Field Replaceable 1KW Modules
Using Elite RF Patented Combining Technology

General Description:

Elite RF's HP Series amplifier is a Narrowband power amplifier designed for pulsed signals fabricated on GaN process and can operate up to **3100 MHz**. These amplifiers offer high power density, low thermal resistance, and rugged performance. They can be widely used for military and commercial applications.

Like all Elite RF amplifiers, this product comes with an industry leading warranty.

Features

- 15KW Pk. Output Power
- Fwd/Rev power monitor
- Current/temp of each module
- Forward power sample port
- RS422 control
- Gate trigger input
- Protection alarms
- System interlock
- Air cooled
- Water cooled options available

Protections

- Thermal shutdown at 85 deg C
- VSWR shutdown at 3:1
- Duty cycle shutdown at > 10%
- Pulse width shutdown at > 100 usec
- Forward power shutdown at 17 KW
- System alarms

ELECTRICAL SPECIFICATIONS

Parameter	Symbol	Min	Typ	Max	Unit
Frequency Range	BW	2700		3100	MHz
Output Power Pk	Psat	17	20		kW
Pulse Droop	Pd		0.5	1.0	dB
Small Signal Gain	Gp	72	75		dB
Gain Flatness	Delta Gp 1		+/- 5	+/- 1	dB
Input VSWR	S11		2:1		Ratio
Duty Cycle	DC		5	20	%
Harmonics	H		-40		dBc
Spurious Signals	Spur		-60		dBc
AC Operating Voltage / 50- 60 Hz	Opv	208 3P3W		380 3P4W	VAC
Power Consumption @10% DC	Pd		5000	6000	Watt
DC Pulse rise and fall time Pulse	Prf			200	nsec
Width	PW		10	100	usec
Power Gain	Lsq	70	73		dB
Max Load VSWR @ 15kW Pk	ML			3:1	Ratio

ENVIRONMENTAL CHARACTERISTICS

Parameter	Symbol	Min	Typ	Max	Unit
Operating Temperature	Tc	0		+50	Deg. C
Storage Temperature	Tstg	-40		+85	Deg. C
Relative Humidity (non-condensing)	RH			95	%
Altitude	ALT			10,000	Feet
Vibration/Shock	VI /SH				Normal Truck Transport

MECHANICAL CHARACTERISTICS

Parameter	Symbol	Min	Typ	Max	Unit
Dimensions	Dim		24w x 72h x 38d		Inches
Weight	Wt.		1000		lbs.
Connectors In/Out	RF Conn		N-Type / WR284		-
Cooling	Th		Air cooling		-

OPTIONS

Parameter	Add suffix to part number
Heat sink and fans	N/A
Isolator with forward and reverse voltage outputs	N/A
TTL Input Trigger	N/A

Mechanical Drawings

